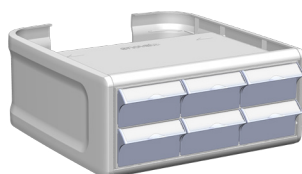


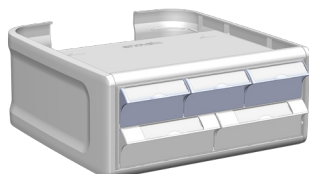
# ENVOY 2.0 SECURE MEDICATION BINS & SUPPLY DRAWERS



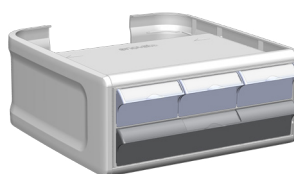
## TWO TIER



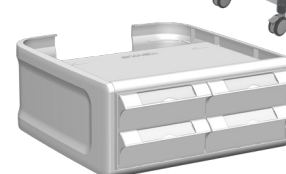
EV2D2001  
6 Small Bins



EV2D2002  
3 Small Bins  
2 Medium Bins



EV2D2003  
3 Small Bins  
1 Large Bin



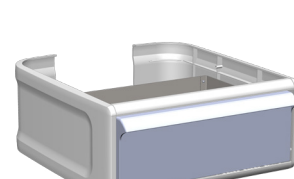
EV2D2004  
4 Medium Bins



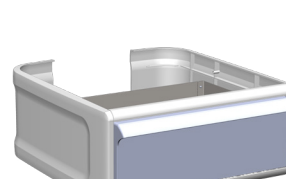
EV2D2005  
2 Medium Bins  
1 Large Bin



EV2D2006  
2 Large Bins

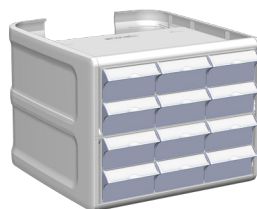


EV2D2007  
1 Large Drawer

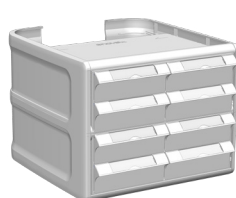


EV2D2008  
1 Large Drawer  
**Non-locking**

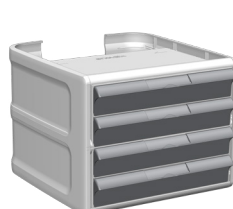
## FOUR TIER



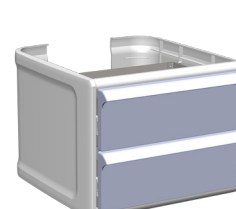
EV2D4001  
12 Small Bins



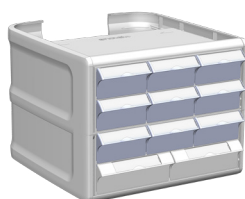
EV2D4002  
8 Medium Bins



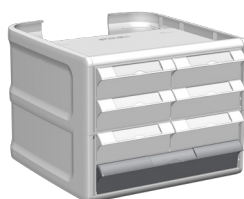
EV2D4003  
4 Large Bins



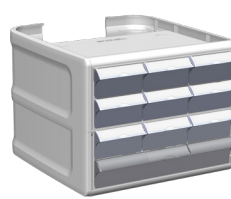
EV2D4004  
2 Large Drawers



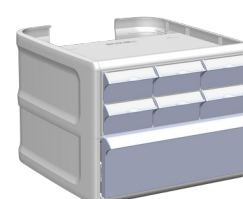
EV2D4005  
9 Small Bins  
2 Medium Bins



EV2D4006  
6 Medium Bins  
1 Large Bin



EV2D4007  
9 Small Bins  
1 Large Bin

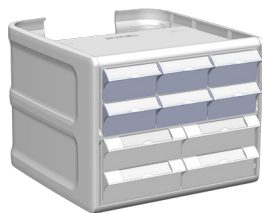


EV2D4008  
6 Small Bins  
1 Large Drawer

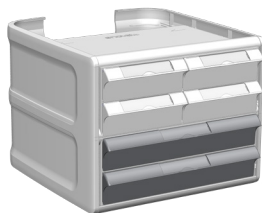
# ENVOY 2.0 SECURE MEDICATION BINS & SUPPLY DRAWERS



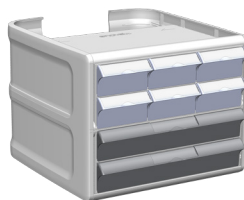
## FOUR TIER



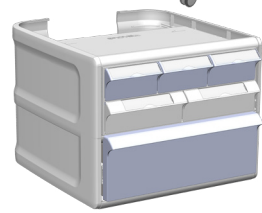
EV2D4009  
6 Small Bins  
4 Medium Bins



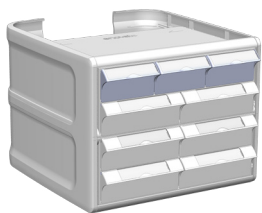
EV2D4010  
4 Medium Bins  
2 Large Bins



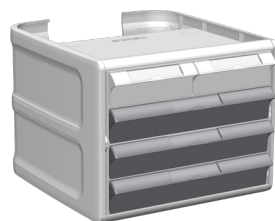
EV2D4011  
6 Small Bins  
2 Large Bins



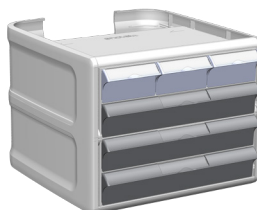
EV2D4012  
3 Small Bins  
2 Medium Bins  
1 Large Drawer



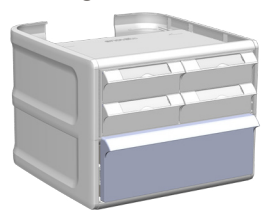
EV2D4013  
3 Small Bins  
6 Medium Bins



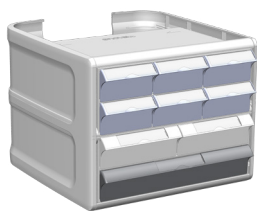
EV2D4014  
2 Medium Bins  
3 Large Bins



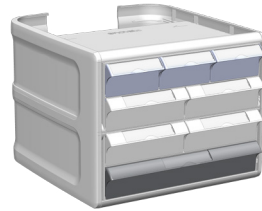
EV2D4015  
3 Small Bins  
3 Large Bins



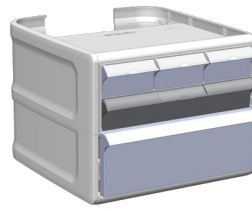
EV2D4016  
4 Medium Bins  
1 Large Drawer



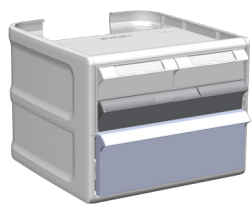
EV2D4017  
6 Small Bins  
2 Medium Bins  
1 Large Bin



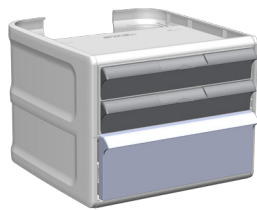
EV2D4018  
3 Small Bins  
4 Medium Bins  
1 Large Bin



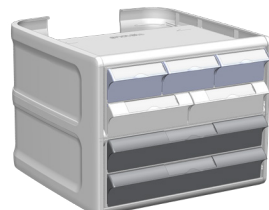
EV2D4019  
3 Small Bins  
1 large Bin  
1 Large Drawer



EV2D4020  
2 Medium Bins  
1 Large Bin  
1 Large Drawer

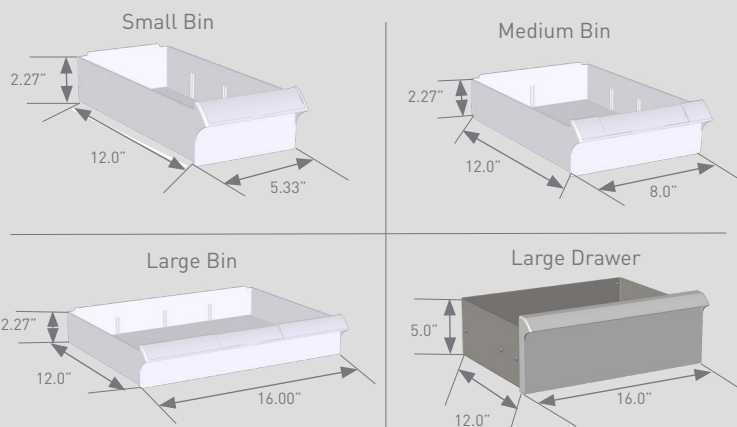


EV2D4021  
2 Large Bins  
1 Large Drawer



EV2D4022  
3 Small Bins  
2 Medium Bins  
2 Large Bins

### Internal Dimensions of Bins and Large Drawer



Please note that all drawers will be light gray in color, they are shaded in the illustrations to clearly distinguish bin and drawer size

# ENVOY 2.0 SECURE MEDICATION BINS & SUPPLY DRAWERS

| PART #   | DESCRIPTION                                    |
|----------|--|
| EV2D2001 | DRWR, 2-TIER LOCKING, 3 OVER 3, ENVOY          |
| EV2D2002 | DRWR, 2-TIER LOCKING, 3 OVER 2, ENVOY          |
| EV2D2003 | DRWR, 2-TIER LOCKING, 3 OVER 1, ENVOY          |
| EV2D2004 | DRWR, 2-TIER LOCKING, 2 OVER 2, ENVOY          |
| EV2D2005 | DRWR, 2-TIER LOCKING, 2 OVER 1, ENVOY          |
| EV2D2006 | DRWR, 2-TIER LOCKING, 1 OVER 1, ENVOY          |
| EV2D2007 | DRWR, 2-TIER LOCKING, 1 DOUBLE DEEP, ENVOY     |
| EV2D2008 | DRWR, 2-TIER NON-LOCKING, 1 DOUBLE DEEP, ENVOY |
| EV2D4001 | DRWR, 4-TIER LOCKING, 3/3/3/3, ENVOY           |
| EV2D4002 | DRWR, 4-TIER LOCKING, 2/2/2/2, ENVOY           |
| EV2D4003 | DRWR, 4-TIER LOCKING, 1/1/1/1, ENVOY           |
| EV2D4004 | DRWR, 4-TIER LOCKING, 2 DOUBLE DEEP, ENVOY     |
| EV2D4005 | DRWR, 4-TIER LOCKING, 3/3/3/2, ENVOY           |
| EV2D4006 | DRWR, 4-TIER LOCKING, 2/2/2/1, ENVOY           |
| EV2D4007 | DRWR, 4-TIER LOCKING, 3/3/3/1, ENVOY           |
| EV2D4008 | DRWR, 4-TIER LOCKING, 3/3/DOUBLE DEEP, ENVOY   |
| EV2D4009 | DRWR, 4-TIER LOCKING, 3/3/2/2, ENVOY           |
| EV2D4010 | DRWR, 4-TIER LOCKING, 2/2/1/1, ENVOY           |
| EV2D4011 | DRWR, 4-TIER LOCKING, 3/3/1/1, ENVOY           |
| EV2D4012 | DRWR, 4-TIER LOCKING, 3/2/DOUBLE DEEP, ENVOY   |
| EV2D4013 | DRWR, 4-TIER LOCKING, 3/2/2/2, ENVOY           |
| EV2D4014 | DRWR, 4-TIER LOCKING, 2/1/1/1, ENVOY           |
| EV2D4015 | DRWR, 4-TIER LOCKING, 3/1/1/1, ENVOY           |
| EV2D4016 | DRWR, 4-TIER LOCKING, 2/2/DOUBLE DEEP, ENVOY   |
| EV2D4017 | DRWR, 4-TIER LOCKING, 3/3/2/1, ENVOY           |
| EV2D4018 | DRWR, 4-TIER LOCKING, 3/2/2/1, ENVOY           |
| EV2D4019 | DRWR, 4-TIER LOCKING, 3/1/DOUBLE DEEP, ENVOY   |
| EV2D4020 | DRWR, 4-TIER LOCKING, 2/1/DOUBLE DEEP, ENVOY   |
| EV2D4021 | DRWR, 4-TIER LOCKING, 1/1/DOUBLE DEEP, ENVOY   |
| EV2D4022 | DRWR, 4-TIER LOCKING, 3/2/1/1, ENVOY           |